



## Programmable Evacuation Controller A 1700

PROFESSIONAL AUDIO PRODUCTS



### DESCRIPTION

Simple to use, yet boasting a host of features, the A1700 timer and tone generator can be used in a variety of applications, anywhere from a school to industrial plants. Ideal for indicating lunch breaks, shift changes, etc.

The unit can be configured for up to 14 ON cycles per 24 hr period with an ON duration of between 1 second to 23 hours 59 minutes and 59 seconds, the unit can be set to operate on any combination of days. All timer settings can be operated automatically, manually overridden or switched off.

The unit features an inbuilt alert/evac generator which can be operated from either the front panel switches or via remote trigger contacts on the back of the unit.

A choice of 5 tones are available and can be fed to the auxiliary input of an external amplifier if required.

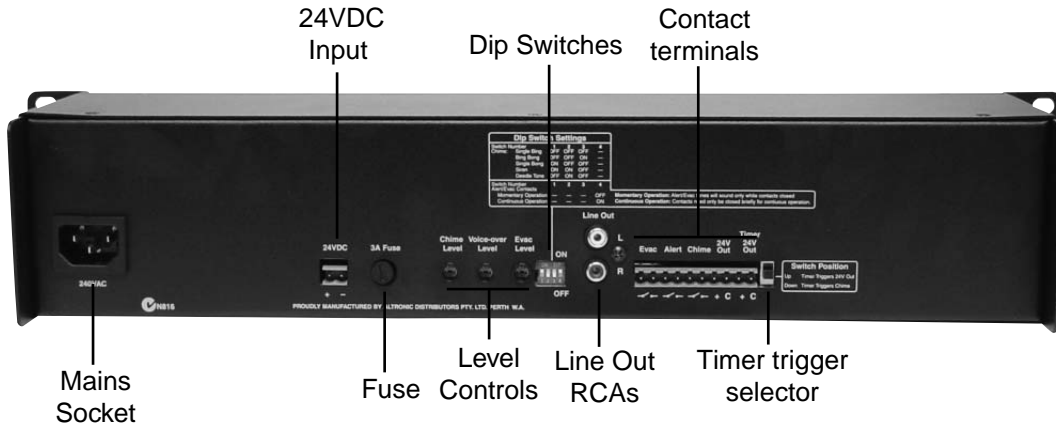
### FEATURES

- 19" 2U Rack mount or desk mount
- Timer may trigger Chime or 24VDC out
- Choice of 240VAC or 24VDC operation
- Choice of 5 tones for the bell chime
- In-built manually operated Alert/ Evac switches
- Remote trigger contacts for Alert, Evac and Chime
- Programs are retained during power failure
- Up to 14 "ON" programs per 24 hours
- Unit may be programmed to operate on any combination of days
- 2 Year warranty
- Made in Australia



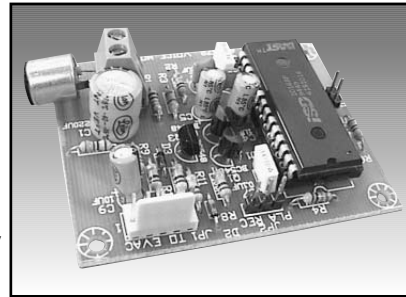
# Programmable Evacuation Controller A 1700

## PROFESSIONAL AUDIO PRODUCTS



### A 2072 VOICE-OVER MODULE (OPTIONAL)

Provision has been made for an optional voice-over module to be added to the basic model. When this module is fitted and the evacuation tone is operating, the voice-over module will interrupt it after every four cycles and deliver it's recorded message twice. This sequence continues until the evac tone is manually cancelled. Maximum message length is approximately 16 seconds.



### SPECIFICATIONS\*

**OUTPUT LEVEL:** .....0dBm  
**DISTORTION:** .....0.01%  
**FREQ. RESP.:** .....140Hz - 20kHz  
**SIGNAL TO NOISE RATIO:**  
 Alert/Evac/Chime: .....-70dB typically

**OUTPUT CONNECTORS:**  
**Audio Output:** .....RCA Stereo Socket  
**Switched 24V DC Out:** .....Pluggable Terminals  
**Timer activated 24V DC Out:**Pluggable Terminals

**INPUT CONNECTORS:**  
**24V DC Power:**.....Pluggable Terminals  
**240V AC Power:** .....IEC Chassis Socket  
**Remote Alert, Evac, Chime:** .Pluggable Terminals

**CONTROLS:**  
**Day, Hour , Minute, Second**  
**Clock, Manual/ Auto/ Off set** .....Timer controls  
**Tone Selection /**  
**Alert Evac operation**.....Dip Switches  
**Alert, Evac, Chime, Voice over:**.....Rear Volume  
**Power:** .....On/Off Switch  
**Alert Switch:** .....Illuminated Push Switch  
**Evac Switch:** .....Illuminated Push Switch  
**Bell / Chime Switch:** .....Illuminated Push Switch  
**Cancel Switch:** .....Push Switch

**INDICATORS:** .....Power on LED  
**POWER SUPPLY:**.....240V AC or 24V DC  
**DIMENSIONS:** .....≈ 482W x 152D x 44H  
**WEIGHT:** ..... ≈ 2.3 kg  
**COLOUR:** .....Black  
**OPTIONS:** .....A 2072 Voice Over Module

\* Specifications subject to change without notice.

Distributed By: