

## Multi-Room Audio Distribution System

- A 5020 Matrix control unit
- A 5024 Multizone amplifier
- A 5026 Remote wall plate

# PROART



A 5020



A 5026



A 5024

### Features

- Remote source and volume selection via wall plate or IR remote control
- Up to 6 speaker zones
- Up to 8 input sources
- Wallplates can be situated up to 50m from controller
- Uses Cat 5 cable and RJ45 connections
- Wall plate fits standard electrical wall box
- Source selection and volume level display
- Easy to install and configure
- 3 external contact switch outputs
- Priority input (for use with doorbell etc.)
- IR repeaters for external source control eg: (CD, tuner, DVD)
- Bridgeable multi-zone amplifier

## Proart Audio Distribution System

### Distribute up to 8 input sources to 6 speaker zones.

With today's modern homes, multi-source and multi-room audio is becoming increasingly popular. This hi-tech system allows the integration of up to 8 program sources ie tuner, CD, DVD to be distributed to six different rooms or zones. This enables the selection of a desired source and volume setting in each room independently of other room settings. For example, you could select the football in the games room and Classic FM in the bedroom. A complete system comprises of three components; control wall plates, input matrix controller and zone amplifier.

**A 5020 Matrix Control Unit:** This is the main hub of the system, where the program sources and control cables from the wall plates are connected. It accepts up to 8 line level inputs and switches them to 6 line level outputs for connection to independent zone amplifiers. Each zone has a RJ45 socket for the remote wall plate controller and RCA stereo output sockets for the zone amplifier. 3 switched output connections are provided to allow control of external devices from the remote wall plates. These could be used to control window shutters, projector screens, air conditioners and so forth. 3 IR repeater ports are included for operation of source devices such as CD, tuner, DVD, from the remote wall plates. For example, you can change CD tracks or radio stations using an IR remote control in a room fitted with a wall plate controller. The output of the matrix unit can be connected to the A 5024 multi-zone amplifier or any other amplifiers. A set of switch contacts is provided for "priority". When these contacts are connected, input source 8 is selected, overriding all wall plate controllers.

**A 5024 Multi-Zone Amplifier:** Includes 12 independent amplifier modules rated at 40W, which can be configured as mono or used to form up to 6 stereo amplifiers. Both shared and dedicated zone RCA inputs are provided. Speaker outputs via binding post connectors. Separate volume controls are provided on the front panel for each zone. Each channel may be bridged for higher power requirements.

**A 5026 Remote Control Panels:** Allows selection of program source and volume adjustment. LED display shows the selected program source and current volume setting. Includes infra red (IR) receiver allowing both program and volume adjustment with the supplied remote control. In addition, it allows control of the source device eg CD player, tuner. For ease of installation, the controller has been designed to fit a standard electrical wall box and connections are made using standard Cat 5 cable and RJ45 connectors. Maximum recommended cable distance, 50 metres.

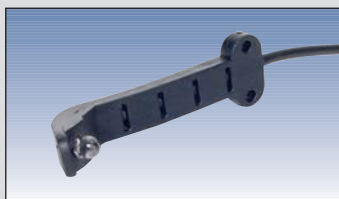
**Infra Red Accessories To Suit:** The A 5020 features infra red repeater outputs on the rear of the unit allowing any AV equipment with remote control functionality to be controlled via the systems wall plates.

**A 1052 Infra Red Emitter** - IR emitter for one AV device.

**A 1053 Dual Infra Red Emitter** - IR emitters for two AV devices.

**A 1075 Infra Red Target** - Provides a target for remote controls (in addition to wall plate IR control).

**A 1076 Infra Red Target Wallplate** - Provides a neat stylish infra red target for remote controls.



IR Emitters allow remote control of just about any AV device from zone wallplate.



A 1075 IR target provides an additional method of relaying IR signal to AV devices.



## A 5020 Rear Panel

- |                                    |                                    |                            |
|------------------------------------|------------------------------------|----------------------------|
| 1. Source input 1-4 (stereo RCA)   | 4. RJ45 remote control panel input | 7. Switching contacts (x3) |
| 2. Source input 5-8 (stereo RCA)   | 5. Infra red input                 | 8. Priority contacts       |
| 3. Zone source output (stereo RCA) | 6. Emitter outputs (x3)            | 9. 240V AC input           |



## A 5024 Rear Panel

- |                                 |                                    |                  |
|---------------------------------|------------------------------------|------------------|
| 1. Zone source input            | 4. Binding post speaker connection | 7. 24VDC input   |
| 2. Source selection switch      | 5. All zone source input/output    | 8. 240V AC input |
| 3. Stereo / bridged mode switch | 6. 24VDC trigger switch            |                  |

## Specifications

### SYSTEM

Output Level (max) .....8V RMS  
 Frequency response .....10Hz – 50kHz +/- 0.5dB  
 Total harmonic Distortion.....<0.005% (20Hz – 20kHz)  
 Hum and Noise .....<-80dB  
 Crosstalk.....<-60dB at 1kHz  
 Input impedance .....30k Ohms  
 Voltage gain .....10dB

### A 5020 CONTROL UNIT

#### Connectors

Audio input .....8 x stereo RCA sockets  
 Audio output .....6 x stereo RCA sockets  
 Wallplate connections .....6 x RJ45 8P8C sockets  
 IR emitters .....3 x 3.5mm mono sockets

IR receiver.....3.5mm stereo socket  
 Priority switch contact.....screw terminal block  
 Output switch contact .....screw terminal blocks  
 AC power.....IEC socket  
 Dimensions.....420W x 350D x 88mmH  
 Input voltage.....100/120V ac,  
 220/240V ac switchable 50/60Hz  
 Weight.....5.8kg  
 Fuse .....3A M205 size

### A 5024 AMPLIFIER

Power (at 8 Ohms THD < 1%): ....40W RMS (80W Max.)  
 Power (at 4 Ohms THD < 1%): ..60W RMS (120W Max.)  
 Bridged Power (At 8 Ohms): ....120W RMS (200W Max.)  
 Distortion: .....< 0.002%

S/N Ratio (IEC-A): .....> 90db  
 Frequency Response (+/- 1db) : .....10Hz-40KHz  
 Dimensions: .....483 x 132 x 380m(W x H x D)  
 Weight: .....13.5 Kg (Net)

### A 5026 WALL PLATE

Indicators: .....Receive / transmit LED  
 .....Switched outputs (x3 LED)  
 Controls: .....Volume up/down, Source up/down

Distributed By:

Distributed in Australia By...

**ALTRONIC** DISTRIBUTORS PTY. LTD.  
 www.altronics.com.au